

Isocratic LC500



Gradient LC500

Established in 2018, Jiangxi Tianzhao Chromatography Technology Co., Ltd is a national High-Tech Company. Hold by Hangzhou Tianzhao Technology Co., Ltd who established in 2010. It's a professional manufacture of HPLC--high performance liquid chromatography.

With more than 13 years of experiences in R&D, Producing, Selling and Servicing, we gathered 30+ excellent professionals and gained more than 40 invention patents and copyrights.

Our products including: HPLC--high performance liquid chromatography system, DAC--dynamic axial compression column system, GPC--gel purification chromatography system, post-column derived system, simulated moving bed, also the parts of chromatographs and so on. Our products are widely used in foods industry, medical industry, chemical industry, electronic and electrical industry ,biochemical purification, life sciences and so on.

We insist “ In Search of Excellence! Respect for the Individual! Servicing Customers! Honesty and Responsibility!” . Trying our best to create a competitive, inovative and first-rate of the world enterprise in the near future.

LC-500 gradient chromatography system

Technical Parameter for pump and detector

2 Pumps

Flow range:0.01-10ml/min

Accuracy of flow: $\pm 1\%$

Highest Pressure:42.0MPa

Gradients:binary

Power supply:AC 110V/220V, 50-60Hz

Material of the pump head: 316L/PTFE/PEEK

Size:400mm x300mm x180mm

Weight: 8.0kgs

Detector

Lamp: lamp Deuterium & lamp Tungsten

Wavelength range:190-770nm

Bandwidth:<6nm

Accuracy of wavelength: $\pm 2\text{nm}$

Repeatability of wavelength:0.5nm

Noise: $\pm 5 \times 10^{-5}\text{AU}$

Drift: $5 \times 10^{-4}\text{AU(P-P)}$

Size:400mm x300mm x180mm

Weight: 8.0kgs

Unit Price: USD8250.00 (EX works price)

Price includes following important components of the instrument

1 pc 7725i manual injector valve

1 pc N2000 chromatography data workstation

1 pc 500II static Mixer

1 pc C18 chromatography column

1 pc starter kit incl 0.17mm id cap

1 pc column oven



HPLC isocratic system



Parameter

1 Pump

Range of flow:0.01-10ml/min

Accuracy of flow:±1%

Highest Pressure:42.0MPa

Gradients:binary

Power:AC110V/220V, 50-60Hz

Size:300mm x240mm x180mm

Weight: 8.0kgs

Detector

Lamp: lamp D

Range of wavalength:190-800nm

Bandwidth:<6nm

Accuracy of wavalength:±1nm

Step plus:1nm, can be set by keyboard or

RS232/485/USB

Noise:±5x10⁻⁵AU

Drift:1x10⁻⁴AU(P-P)

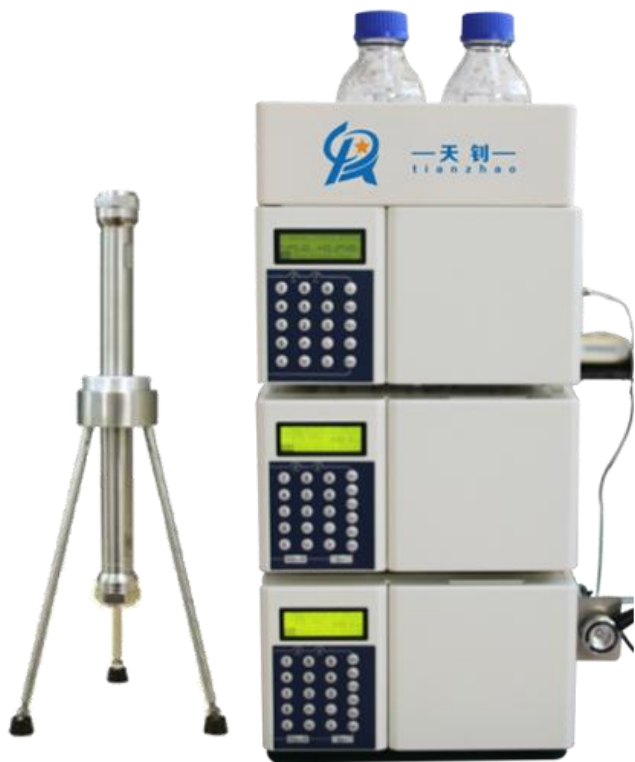
Power:AC110V/220V, 50-60Hz

Size:300mm x240mm x180mm

Weight: 8.0kgs

GPC-Gel preparative chromatography system

Product Parameter



LC-500 detector
Flow range: 0.01-10ml/min(set step size 0.01mL/min)
Lamp source: D lamp/tungsten lamp
Flow accuracy: $\pm 1\%$ or 2uL/min (0.01-10mL/min)
wavelength range: 190-700nm with a step increase of 1nm
Maximum working pressure: 42.0MPa can be set upper and lower limits,
automatic alarm bandwidth: <6m
Flow accuracy: $\pm 1.0\%$ or 2uL/min (0.001-10mL/min)
Wavelength accuracy: ± 1 nm
Flow precision: 0.25%
wavelength repeatability: 0.5nm
Gradient: 2 or 3
absorption range: 0.0005AU/ Mv-4au /mV
Gradient mode: Gradient elution internal software can be self-controlled, can be controlled by PC and pump
Noise: $\pm 5 \times 10^{-5}$ AU
Power supply: AC110V/220V, 50Hz/60Hz drift 2×10^{-4} AU (P-P)
Size: 400mm \times 300mm \times 180mm

Secondary post-column active derivations system

Product Parameter



Flow rate of derivative liquid : 0.001-
10.000ml/min

Temperature range: room temperature or
above ~ 99.9°C

Temperature accuracy: $\pm 0.25^{\circ}\text{C}$

Temperature stability time: < 25 minutes

Constant temperature error: $\pm 0.1^{\circ}\text{C}$

Temperature overshoot: < 1.8°C

Accuracy: $50^{\circ}\text{C} \pm 0.1^{\circ}\text{C}$

Constant temperature chamber size:
75mm × 35mm × 400mm

Reduplication: $\pm 0.1^{\circ}\text{C}$

Heating power: 120w

Power source: 220V/50Hz

Analysis Pump

Product Parameter

Flow range: 0.01-10ml/min

Accuracy: $\pm 2\%$ or $\pm 2 \mu\text{L}/\text{min}$ (Max)

Precision: 1% (0.1mL /min-50 mL/min.,

Room temperature: 20 °C)

Pressure range: 0-20 mpa

**Pressure pulsation: < 0.1MPa (flow
1mL/min)**

**Resolution: fixed phase or mobile phase
can be chosen to achieve good separation
effect**

Gradient: 2 or 3

**Gradient mode: Gradient elution internal
software can be self-controlled, can be
controlled by PC and pump**

**Power supply :100 to 240 VAC, 50 to 60Hz,
100 Watts**

**Appearance size: (length \times width \times
height) 400mm \times 180mm \times 300mm/**

Weight:8.0kg



UV Detector

Product Parameter

Linear range: 2.8AU(5%)

Wavelength range: 190-700nm

Wavelength accuracy: <1nm

Wavelength repeatability:<0.1nm

Data system output:4AU/V injector control, auto zero setting ,support recorder and integrator.

Baseline noise: $<\pm 1.0 \times 10^{-5}$ AU

Baseline drift:<2x10₋₄AU/h

Sample tank: Preparative tank(5mm,4.5ul)

Power supply :110 /220 VAC, 50 to 60Hz, 100 Watts

Appearance size: (length × width × height) 400mm × 180mm × 300mm/

Weight:8.0kg



Preparative Chromatograph system



Pump head:316L Stainless Steel pump High precision, low pulse, corrosion resistance (peek pump head optional)
Velocity range:0.01-200.00ml/min (gradient)
Velocity accuracy:Plus or minus 0.5%
Pressure range:0-20MPa
Pressure pulsation:0.2 MPa or less
Gradient type:Step, linear gradient, online modification of gradient and flow rate
Gradient regulation:1%
Detector light source: D lamp + Tungsten Lamp (imported)
Detection wavelength:
Full-wavelength detector 190-900nm dual-wavelength simultaneous detection
Wavelength accuracy:Plus or minus 1 nm
Absorbance range: 0-3AU
Fully automatic collector: Collecting pipe rack:2 x 60 test tubes (Φ15mm*150mm test tubes) other specifications can be selected
Collection mode:Common mode (time collection, peak collection, threshold collection), sequential collection, cyclic collection
Manual loading valve:Preparative Chromatography Valve (standard 10ml quantitative ring)
Loading method:Solid sample or liquid sample
Power supply:220V ± 10% 50Hz
Chromatographic software control:Through WOOK500 chromatography software control pump, UV, automatic collector and other components set up and operation
Control interface:Graphical interface, USB interface, based on Windows7/Windows 10 PC software workstation

DAC Dynamic Axial Compression Column System

Product Parameter

The motor control circuit with independent technology ensures the reliability and stability of the pump.

* CAM curve compensation technology is adopted to effectively control the flow pulsation and ensure the baseline noise.

* Multi-point flow and pressure correction ensures flow accuracy and pressure stability in the full flow range

* Floating plunger and sealing ring technology design, to ensure the service life of high pressure sealing ring

* 25 user programs, enabling flow and gradient programming.

* Single wavelength detection, wavelength time program, full wavelength energy scanning and pump shutdown scanning

* Can quickly and easily replace the lamp and flow pool, D lamp tungsten lamp to realize intelligent switching, to ensure the normal operation time.



DAC Dynamic Axial Compression Column System

Product Parameter



Model No.	WK8010 DAC Dnamic Axial Compression Columns System
Set step size	0.01ml/min
Infusion mode	Double plunger series connection
Flow range	(0 ~ 999.99) mL/min
Max working pressure	15MPa
Flow accuracy	±0.5%
Reproducibility RSD)	0.3%
Control mode	RS232 or LAN
Display screen	5.6 inch touch screen
Size for each pump	L488*W380*H215mm
Size for detector	L368*W260*H140mm
Size for DAC column	L650*D200mm, 10um
Power for pump	1000W
Weight for pump	27.2kg

HPLC-Injection valve

Product Parameter



- *Wide 30 degree port, easy for connection.
- *Single point pressure regulation, reduces friction between rotor gasket and stator, prolonging service life.,
- *A built-in sensing switch, provides a reproducible start signal for the chromatograph
- *Make-Before-Break technology, reduce the pressure fluctuation while load-inject changing-over .
- *The Max tolerable temperature: 80oc
- *The max tolerable pressure: 48Mpa
- *Material: 316L, Vespel
- *Range of PH: 0-10, if ph below 10, we can use PEEK material
- *Optional 2 microliter built-in ultramicro quantitative tube and accessories

C18 Hypersil Series LC column



Product Parameter

- Hypersil ODS(C18) 5um ID2.1mm*150mm
- Hypersil ODS(C18) 5um ID4.0mm*150mm
- Hypersil ODS(C18) 5um ID4.0mm*200mm
- Hypersil ODS(C18) 5um ID4.0mm*250mm
- Hypersil ODS(C18) 5um ID4.0mm*300mm
- Hypersil ODS(C18) 5um ID4.6mm*150mm
- Hypersil ODS(C18) 5um ID4.6mm*200mm
- Hypersil ODS(C18) 5um ID4.6mm*250mm
- Hypersil ODS(C18) 5um ID4.6mm*300mm
- Hypersil ODS(C18) 10um ID2.1mm*150mm
- Hypersil ODS(C18) 10um ID4.0mm*150mm
- Hypersil ODS(C18) 10um ID4.0mm*200mm
- Hypersil ODS(C18) 10um ID4.0mm*250mm
- Hypersil ODS(C18) 10um ID4.0mm*300mm
- Hypersil ODS(C18) 10um ID4.6mm*150mm
- Hypersil ODS(C18) 10um ID4.6mm*200mm
- Hypersil ODS(C18) 10um ID4.6mm*250mm
- Hypersil ODS(C18) 10um ID4.6mm*300mm

HPLC-PEEK Connector



Product details

1. Thermostability, Corrosion preventive, and performance stability in chemical.
2. The nuts are easy to rig, no need tools, as well as you can use your hands, and it is easy to control. It can instead of the metal.
3. It can be used in high pressure as well as 4000psi (most the environment of the liquid chromatography is below 3000psi).
4. It is pureness, no microelement included, so it can't influence the result of the experiment